

Motorized height adjustment with 20-cm travel delivers a flexible ergonomic scanning position



Customizable touch screen user interface to personalize your workflow



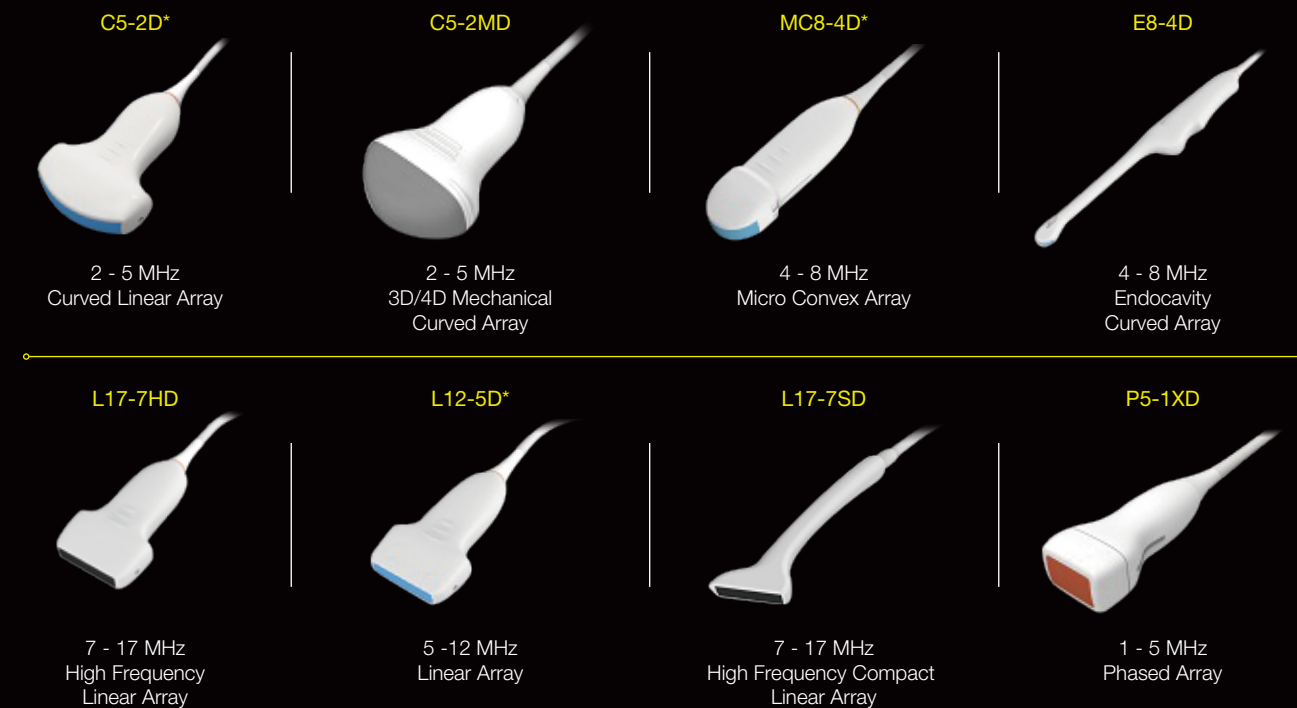
Four active transducer ports so the transducer you need is always ready to use



Down lit pull-out keyboard provides flexibility for annotations and data entry



## Transducers



\* Subject to regulatory clearance

### About Edan

Edan is a healthcare company dedicated to improving the human condition around the world by delivering value-driven, innovative and high-quality medical products and services. For over 20 years, Edan has been pioneering a comprehensive line of medical solutions that address a broad range of healthcare practices including:

- Diagnostic ECG
- Ultrasound Imaging
- In-Vitro Diagnostics
- Patient Monitoring
- Point-of-Care Testing

Healthcare professionals around the world depend on Edan's breakthrough medical technologies and outstanding customer support.



**U.S. inquiries:**  
EDAN Diagnostics, Inc. | 9833 Pacific Heights Blvd., Suite E/F  
San Diego, CA 92121-4707 | +1.858.750.3066  
www.edandiagnostics.com | edan-info@edandiagnostics.com

**Inquiries outside of the U.S.:**  
Edan Instruments, Inc. | 3/F-B, Nanshan Medical Equipments Park,  
1019# Nanhai Rd., Shenzhen | 518067 P.R. China  
+86.755.26898326 | www.edan.com.cn | info@edan.com.cn

**Indian inquiries:**  
Edan Medical India Pvt.Ltd. | 415 Time Tower, M.G Road, Sector 28,  
Gurgaon-122002 India. | +91.124.4221108 | Email: india@edan.com.cn



ENG-US-LX8-V1.2-20160627

© 2016 Edan Instruments, Inc. All rights reserved. Features and specifications are subject to change without prior notice. No reproduction, copy or transmission may be made without written permission. Not all products or features are available in all territories, contact Edan for local availability.

# Prepare to be Enlightened

Acclarix™ LX8  
Ultrasound System



## A Clear Vision

### Ultrasound reimagined

Born of a vision to deliver meaningful design innovations that benefit the user. The Acclarix LX8 features a host of design breakthroughs that make day-to-day operation easy, fast and intuitive. The result is an elegant simplicity where form and function meet at the tips of your fingers.







Singularly Flexible.  
Uniquely Powerful.

## Versatility & Innovation Meet Value & Performance

When it comes to power, performance, innovation and flexibility - there is one ultrasound system that delivers more. Designed specifically to address the challenges of busy ultrasound environments, the Acclarix™ LX8 Ultrasound System features a host of design breakthroughs that make day-to-day operation easy, fast and intuitive.

- Unparalleled image quality with one key optimization for all modes and all applications
- User customizable 10" touch screen with innovative gesture control user interface
- Large 21" tilt-and-swivel, HD wide-screen anti-glare LCD monitor

3D/4D imaging on the LX8 system includes a complete suite of rendering and editing tools ensuring maximum results



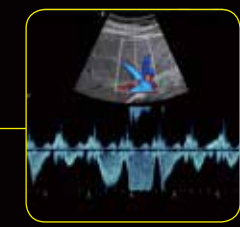
Tissue Adaptive Imaging for Doppler provides exquisite sensitivity and detail resolution with minimal user optimization required as seen in this normal kidney



Tissue Adaptive Imaging with the L17-7HD transducer delivers exceptional contrast and detail resolution in this evaluation of a thyroid lesion



Superb performance of color and spectral Doppler is demonstrated in this view of the hepatic vein confluence



## Image Quality Without Compromise

Flexibility, versatility and user-friendly features are just the beginning. The Acclarix LX8 system also delivers the brilliant clarity and stunning image quality required for fast-paced environments.

- High fidelity, high-channel count architecture results in superb detail resolution, particularly at depth
- Tissue Adaptive Imaging (TAI) continuously and automatically optimizes imaging allowing more focus on the patient
  - In B-mode, TAI fine tunes multiple parameters to provide the best possible image quality
  - In Doppler, TAI automatically adjusts for flow state providing improved continuity, border detection and fill-in



## The Virtue of Value

How can Edan deliver so much innovation AND so much value? By capitalizing on the experience and expertise of a truly global enterprise. Acclarix technology is the result of Silicon Valley innovation and engineering excellence combined with Chinese design and manufacturing proficiency. The Acclarix LX8 delivers unmatched value and performance across a broad range of applications:

- |                      |                     |               |
|----------------------|---------------------|---------------|
| • Abdomen            | • Cardiac Screening | • Small Parts |
| • OB/GYN             | • Vascular          | • MSK         |
| • Difficult-to-Image | • Breast            | • Nerve       |