



# Acclarix™ AX4

Compact Ultrasound System

Redefining Price Performance  
for Point-of-Care Ultrasound.



*Designed specifically to meet the unique needs of point-of-care practitioners, the new AX4 system delivers compelling imaging at an attractive price.*

## Distinctive Design

The sleek, portable AX4 system is designed to be ready to go whenever and wherever you are.

- Lightweight compact design facilitates portability and maneuverability in tight spaces
- Integrated carry handle includes battery level touch-sensor so when you're not connected you're still prepared
- Optional cart and multi-transducer connector for quick access to any transducer



## Intrinsic Quality

With a relentless focus and attention to detail, the AX4 system is designed to meet the demands of any POC environment.

- Completely sealed control panel simplifies maintaining infection control
- Tilt and swivel HD monitor for a clear, comfortable line-of-sight during procedures



## Intelligent Workflow

Completely customizable control panel lets you decide which controls should be front-and-center.

- Gesture-driven, customizable user interface to personalize and simplify your workflow while still maintaining access to advanced features
- Wireless connectivity for easy image archive wherever you are
- Needle visualization to increase confidence for those more difficult situations



## Definitive Image Quality

A comprehensive suite of transducers and POC-specific presets deliver best-in-class image quality.

- Edan's proprietary Tissue Adaptive Imaging continuously and automatically optimizes imaging parameters so you can concentrate on your patient





The nerve roots of the interscalene brachial plexus are well defined with the L12-5Q transducer.



The high-frequency L17-7SQ compact linear array transducer provides excellent superficial detail to easily identify the median nerve.



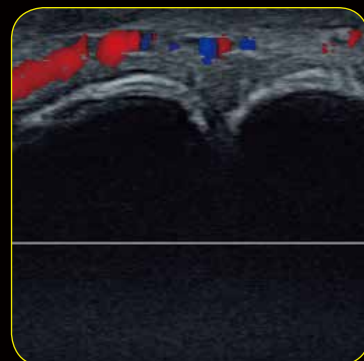
The L12-5Q transducer and Tissue Adaptive Imaging continuously and automatically optimizes multiple parameters resulting in excellent definition of the biceps tendon.



This fluid collection on the anterolateral aspect of the knee is clearly defined with the L12-5Q transducer.



Superior detail and penetration is seen in this normal hip with the C5-2Q transducer.



Highly sensitive color Doppler allows for rapid and confident identification of the radial artery with the L17-7SQ transducer.

*The Acclarix AX4 system can be configured to increase its versatility in a variety of point-of-care environments.*

## Available Options

### Height-Adjustable Cart

- The Acclarix AX4 system integrates seamlessly into the cart for safe and secure transportation in the hospital or clinic
- Four-wheel swivel provides easy maneuverability into tight spaces
- A fifteen degree incline of the deck provides ideal viewing of the system control panel
- Includes convenient transducer and gel holders, cable and power-supply management and a handy storage shelf



### Multi-Transducer Connector Option

- The multi-transducer connector options allows up to three transducers to be simultaneously connected so that the transducer you need is ready at the touch of a control
- Integrates onto the cart or can be used stand-alone



### Transport Suitcase

- The study AX4 transport case is ideal for truly mobile situations
- Equipped with customized transducer and peripheral holders to safely and securely transport and protect your system



# Specifications

## SYSTEM ARCHITECTURE

- Quad beam
- i7 processor with quad virtual cores
- 16Gb memory
- 500Gb hard drive storage

## SYSTEM DESIGN

- Dimensions: W 38.8cm, D 40.7cm, H 7.7cm
- Weight: 9.25kg (includes battery)
- 15" main screen with HD resolution (1920 x 1080)
  - 120° tilt
  - 60° left or right swivel
- 10.1" gesture-control user interface touch screen
- 5" touch screen houses electronic virtual trackball
- Magnetic monitor latch for secure transport
- Integrated carrying handle also provides wrist support during imaging
- Removable lithium ion battery provides approximately 60 minutes of typical ultrasound exam use
- Touch sensor battery level indicator in two locations
- Completely sealed control panel aids in maintaining infection control
- Multi-transducer connector (option)
  - Provides simultaneous connection for up to three transducers
  - Integrates onto system cart or use stand-alone

## ADVANCED FEATURES

- Panorama
  - Available on all linear array transducers
  - Available on linear array transducers
- Needle Visualization
  - improved needle visualization – even at steep angles

\* Requires regulatory clearance.

## B-MODE IMAGING

- Tissue Adaptive Imaging provides continuous and automatic optimization including dynamic range, speckle reduction, spatial compounding and persistence
- One-key auto-optimization

## COLOR DOPPLER

- Adaptive Doppler Imaging automatically and continuously adapts to the flow state to optimize color fill-in, boundary detection and hemodynamic display

## SPECTRAL DOPPLER

- Adaptive PW and CW spectral Doppler automatically and continuously adapts to flow state to optimize spectral display
- One-key auto-optimization

## CONNECTIVITY

- DICOM
- Multiple destination servers
- 4 USB ports (2 USB 2.0; 2 USB 3.0).
- Export: DICOM studies, AVI and BMP files, PDF report
- Store to FTP server
- Wireless connectivity\*
- Password protection

Transducer Name	Imaging Format	Radius or Footprint	Fundamental Frequency Range	Harmonic Frequency Range	Applications Supported
C5-2Q	Curved linear array	60 mm	2-5 MHz	H2-5 MHz	Spine, MSK, Nerve
L12-5Q	Linear array	38 mm	5-11 MHz	H6-12 MHz	Nerve, Superficial Nerve, MSK, Superficial MSK, Vascular Access
L17-7SQ	High-frequency compact linear array	26 mm	7-15 MHz	H9-17 MHz	Nerve, MSK, Vascular Access